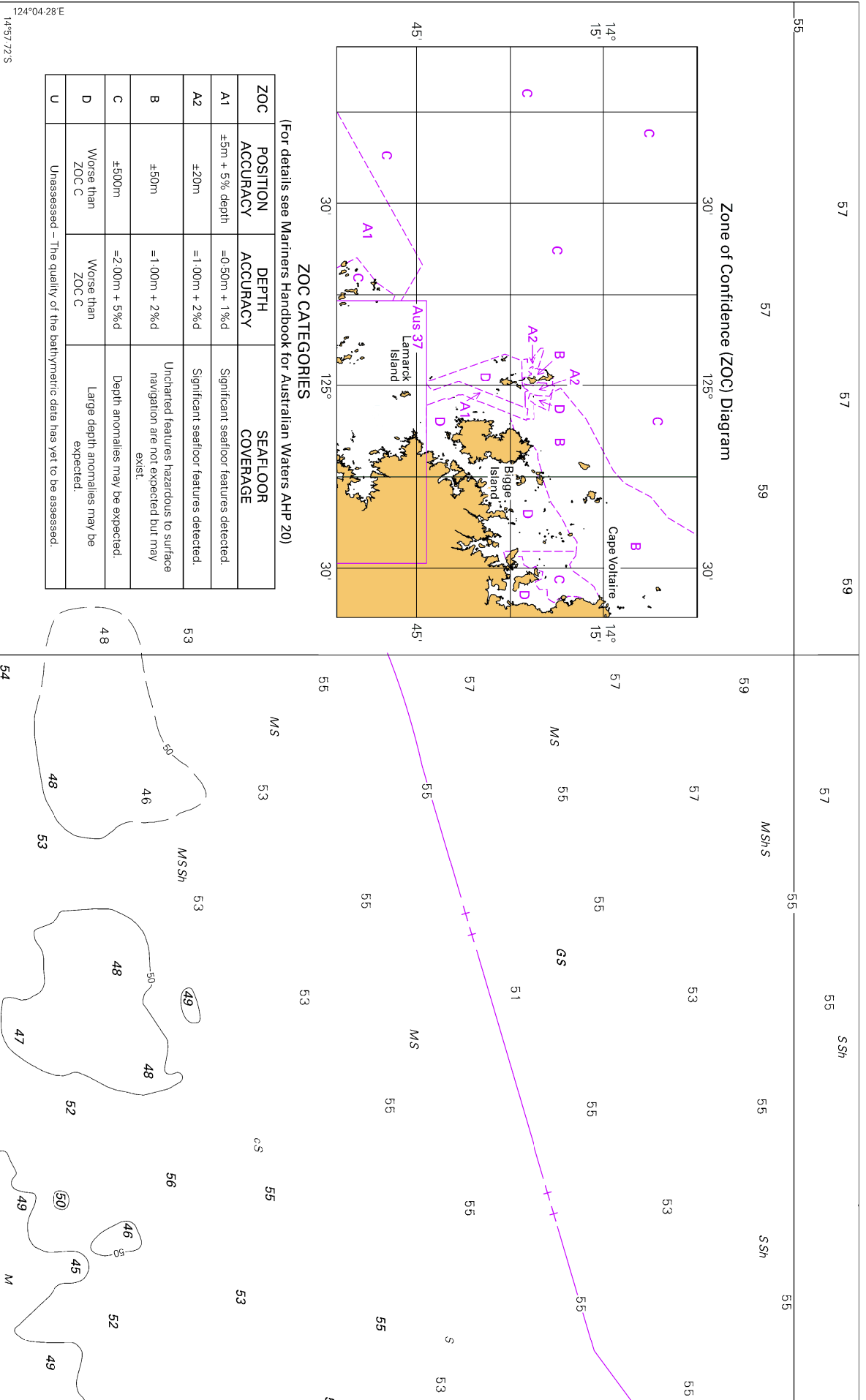


To accompany Australian Notice to Mariners 98/2024



ZOC CATEGORIES
(For details see Mariners Handbook for Australian Waters AHP 20)

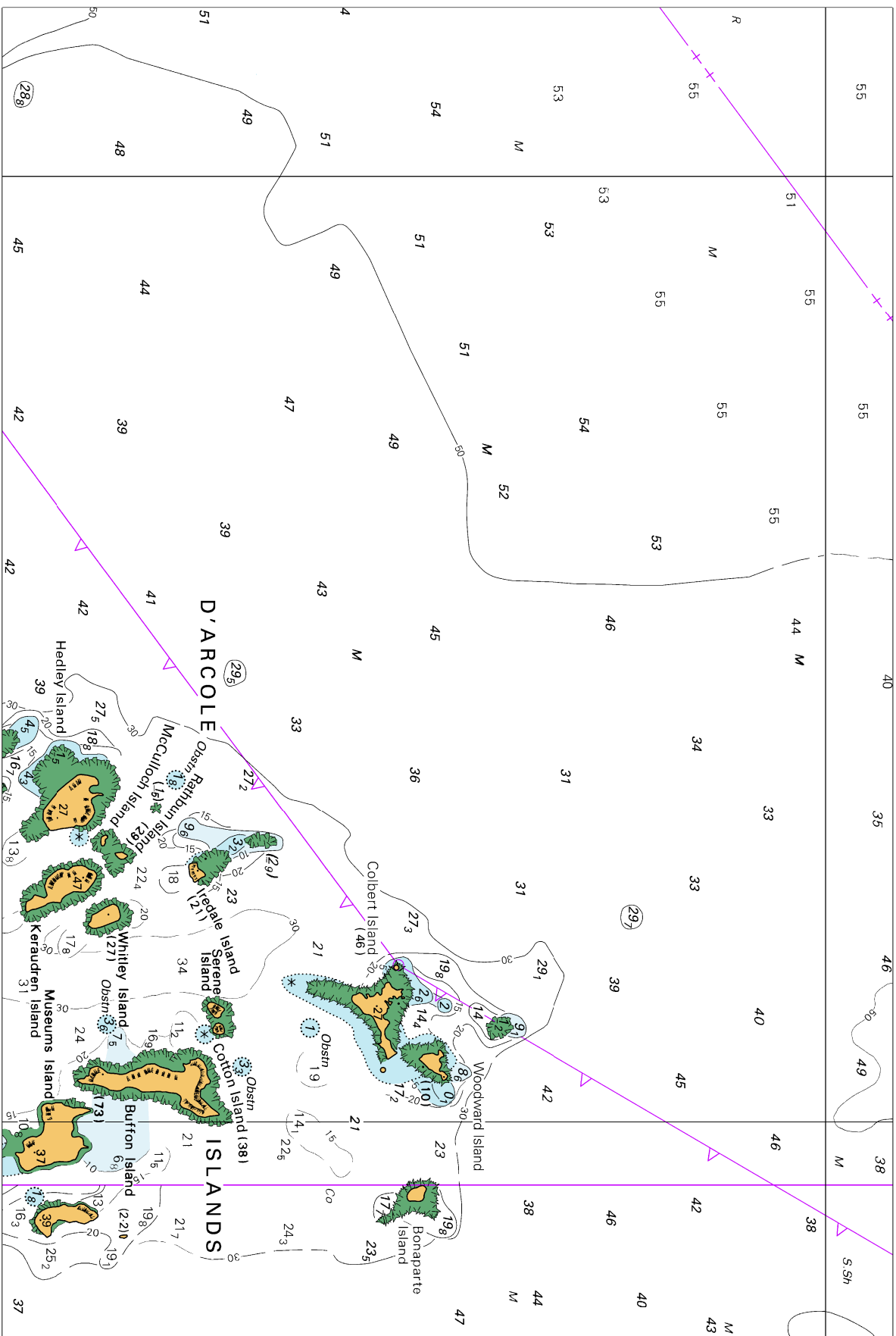
ZOC	POSITION ACCURACY	DEPTH ACCURACY	SEAFLOOR COVERAGE
A1	±5m + 5% depth	=0.50m + 1% d	Significant seafloor features detected.
A2	±20m	=1.00m + 2% d	Significant seafloor features detected.
B	±50m	=1.00m + 2% d	Uncharted features hazardous to surface navigation are not expected but may exist.
C	±500m	=2.00m + 5% d	Depth anomalies may be expected.
D	Worse than ZOC C	Worse than ZOC C	Large depth anomalies may be expected.
U	Unassessed – The quality of the bathymetric data has yet to be assessed.		

Block A for chart Aus 729

© Commonwealth of Australia 2024

(253.7 x 155.6mm)

To accompany Australian Notice to Mariners 98/2024



Block B for chart Aus 729

© Commonwealth of Australia 2024

(232.1 x 155.5mm)