

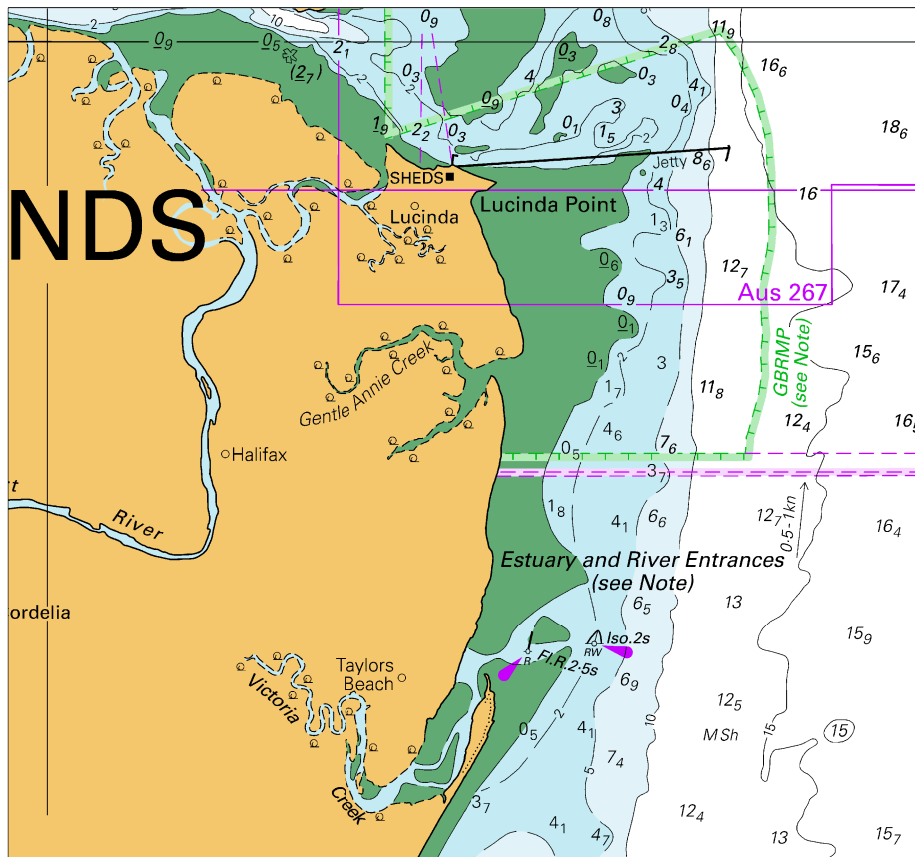
*To accompany Australian Notice to Mariners 210/2024*

ESTUARY AND RIVER ENTRANCES

The crossing of coastal bars and entry to rivers and estuaries is potentially dangerous. Bars and entrances are dynamic in nature, hence the depth and preferred approach may vary. Leading beacons and other navigational aids may not always indicate the best approach. If mariners are unsure of the condition at a particular bar or entrance, local information should be sought prior to crossing.

*Note for chart Aus 828*

To accompany Australian Notice to Mariners 210/2024



Block for chart Aus 828

© Commonwealth of Australia 2024

(120.9 x 112.4mm)