



19 January 2024

Edition 2

# AUSTRALIAN NOTICES TO MARINERS

## Notices 49 - 85

Published fortnightly by the Australian Hydrographic Office



Australian Notices to Mariners are the authority for correcting charts and publications published by the Australian Hydrographic Office covering Australia, Papua New Guinea, Solomon Islands, Australian Antarctic Territory and Timor-Leste.

Commodore R.L. PHILLIPS RAN  
*Hydrographer of Australia*

---

### SECTIONS.

- I. **Australian Notices to Mariners, including blocks and notes.**
- II. **Hydrographic Reports.**

### SUPPLEMENTS.

- I. **Tracings**
  - II. **Cumulative List of Australian Notices to Mariners.**
  - III. **Cumulative List of Temporary and Preliminary Australian Notices to Mariners.**
  - IV. **Temporary and Preliminary Notices in force.**
- 
- 

© Commonwealth of Australia 2024

This work is copyright. Apart from any use permitted under the Copyright Act 1968, no part may be reproduced by any process, adapted, communicated or commercially exploited without prior written permission from The Commonwealth represented by the Australian Hydrographic Office.

## IMPORTANT NOTICE

This edition of Notices to Mariners includes all significant information affecting AHO products which the AHO has become aware of since the last edition. All reasonable efforts have been made to ensure the accuracy and completeness of the information, including third party information, on which these updates are based. The AHO regards third parties from which it receives information as reliable, however the AHO cannot verify all such information and errors may therefore exist. The AHO does not accept liability for errors in third party information.

---

## GENERAL INSTRUCTIONS

The substance of these notices should be inserted on the charts affected.

Bearings are referred to the true compass and are reckoned clockwise from North; those relating to lights are given as seen by an observer from seaward.

Positions quoted in notices relate to WGS84 which is the horizontal datum for all charts produced by the Australian Hydrographic Office.

The range quoted for a light is its nominal range.

Depths are with reference to the chart datum of each chart. Heights are above mean high water springs or mean higher high water, as appropriate.

The capital letter (P) or (T) after the number of any notice denotes a preliminary or temporary notice respectively, which are contained separately at the end of the permanent notices.

---

## REPORTING OF DANGERS

Mariners are particularly requested to notify the AUSTRALIAN HYDROGRAPHIC OFFICE, Locked Bag 8801 Wollongong, NSW 2500 (e-mail [datacentre@hydro.gov.au](mailto:datacentre@hydro.gov.au) or, alternatively by filling in and submitting the [Hydrographic Notes](#) forms located on the web site – [www.hydro.gov.au](http://www.hydro.gov.au)), immediately on the discovery of new dangers or suspected dangers to navigation. For changes or defects in aids to navigation notify AusSAR (Fax 02-6230 6868 or email [rccaus@amsa.gov.au](mailto:rccaus@amsa.gov.au)).

---

## AUTHORISED USE

Copies of Australian notices are available free of charge from the Australian Hydrographic Office (AHO) website ([www.hydro.gov.au](http://www.hydro.gov.au)) and through the eNotices (email) service ([www.hydro.gov.au/enotices/enotices.htm](http://www.hydro.gov.au/enotices/enotices.htm)).

Individual Notices may be copied for the purpose of inserting Notice substance on official charts and publications. Paper copies may be printed by chart agents and distributed to customers on a cost recovery basis. Participating chart agents are listed on the AHO website as providing a 'Paper Notices to Mariners' service ([www.hydro.gov.au/webapps/jsp/agents/agents-list.jsp](http://www.hydro.gov.au/webapps/jsp/agents/agents-list.jsp)). Copies of the notices may not be sold for profit without prior written agreement.

## NUMERICAL INDEX OF NOTICES TO MARINERS

### Edition No 2

Notices	Aus Chart, INT Chart, ENC Cell, AHP, BA Pubs
49	Aus 323, 730
50	Products - New Charts and New Editions to be published shortly
51	Aus 292, 839
52	Aus 262
53	Aus 293, 299
54	Aus 309, 316
55	Aus 324
56	Aus 754
57	Aus 65, 742
58	Aus 346, 485
59	Aus 151
60	Aus 151
61	SLB 101
62(T)	Aus 812, 813
63(T)	Aus 814
64(T)	Aus 814
65(T)	Aus 249, 250, 823, 4602, INT 602
66(T)	Aus 258
67(T)	Aus 258
68(T)	Aus 309
69(T)	Aus 310
70(T)	Aus 117
71(T)	Aus 329, 4723, INT 723
72(T)	Aus 117
73(T)	Aus 65, 327, 742
74(T)	Aus 328
75(P)	Aus 64
76(T)	Aus 112, 754, 755
77(T)	Aus 53, 326
78(T)	Aus 53
79(T)	Aus 349, 487
80(T)	Aus 155
81(T)	Aus 155
82(T)	Aus 155
83(T)	Aus 151
84(T)	Aus 179
85(T)	Aus 177

## NUMERICAL INDEX OF CHARTS AFFECTED

### Edition No 2

Aus Chart	Notices
Aus 53	77(T), 78(T)
Aus 64	75(P)
Aus 65	57, 73(T)
Aus 112	76(T)
Aus 117	70(T), 72(T)
Aus 151	59, 60, 83(T)
Aus 155	80(T), 81(T), 82(T)
Aus 177	85(T)
Aus 179	84(T)
Aus 249	65(T)
Aus 250	65(T)
Aus 258	66(T), 67(T)
Aus 262	52
Aus 292	51
Aus 293	53
Aus 299	53
Aus 309	54, 68(T)
Aus 310	69(T)
Aus 316	54
Aus 323	49
Aus 324	55
Aus 326	77(T)
Aus 327	73(T)
Aus 328	74(T)
Aus 329	71(T)
Aus 346	58
Aus 349	79(T)
Aus 485	58
Aus 487	79(T)
Aus 730	49
Aus 742	57, 73(T)
Aus 754	56, 76(T)
Aus 755	76(T)
Aus 812	62(T)
Aus 813	62(T)
Aus 814	63(T), 64(T)
Aus 823	65(T)
Aus 839	51
Aus 4602	65(T)
Aus 4723	71(T)
SLB 101	61

INT Chart	Notices
INT 602	65(T)
INT 723	71(T)

**49 AUSTRALIA - Products - New Charts, New Editions, Withdrawn Charts**

Australian Hydrographic Office , UKHO

**New Charts**

<i>Chart</i>	<i>Title and Geographical limits</i>	<i>Scale</i>	<i>Publication Date</i>	<i>Remarks</i>
NIL				

**New Electronic Navigation Chart (Aus ENC)**

<i>Cell Name</i>	<i>Title</i>	<i>Publication Date</i>	<i>Remarks</i>
NIL			

**New Editions and Withdrawn Charts**

<i>Chart</i>	<i>Title</i>	<i>Scale</i>	<i>Publication Date</i>	<i>Remarks</i>
Aus 323 <b>(Edition 3)</b>	Australia - North West Coast - Western Australia - Adele Island to Lacepede Islands including King Sound	1:300 000	19 January 2024	New edition with general updating throughout; including new bathymetric data. <b>Chart Aus 323 Edition 2 dated 24 August 2018 is now superseded and must be withdrawn from use.</b>
Aus 730 <b>(Edition 5)</b>	Australia - North West Coast - Western Australia - Lamarck Island to Degerando Island	1:150 000	19 January 2024	New edition with general updating throughout; including new bathymetric data. <b>Chart Aus 730 Edition 4 dated 9 June 2023 is now superseded and must be withdrawn from use.</b>

**Admiralty publication**

<i>NP No</i>	<i>Title</i>	<i>Date</i>	<i>Remarks</i>
NP83	ADMIRALTY List of Lights and Fog Signals. Volume K 4th Edition 2024 Western Pacific Ocean, South of the Equator including Bismarck, Solomon, Coral and Tasman Seas.	25/1/2024	The 3rd Edition (2023) is cancelled.
NP284	ADMIRALTY List of Radio Signals. Meteorological Observation Stations Volume 4, 5th Edition (2024).	25/1/2024	The 4th Edition (2023) is cancelled.

**Chart permanently withdrawn**

Charts listed above as withdrawn no longer meet chart carriage requirements and should be marked as "superseded" and replaced with the new chart/ new edition listed prior to passage through the area covered by the new chart.

When placing orders with a chart agent between notice of forthcoming edition and its publication, mariners should advise whether their order pertains to the current edition or the new edition.

For further details refer to the AHO website at [www.hydro.gov.au](http://www.hydro.gov.au) for new edition and new chart stock arrival information.

**50 AUSTRALIA - Products - New Charts and New Editions to be published shortly**

Australian Hydrographic Office

**New Charts to be published shortly**

Chart	Title	Scale	Remarks
NIL			

**New Editions to be published shortly**

Chart	Title	Scale	Remarks
NIL			

**51 AUSTRALIA - QUEENSLAND - Adolphus Channel - Depths**

Precision Hydrographic Services

**Aus 292 [1039/2023]**

Insert	depth, 19 <sub>6</sub> m, enclosed by contour	10° 41'.89 S	142° 39'.32 E
	depth, 18 <sub>7</sub> m, enclosed by contour	10° 42'.04 S	142° 39'.36 E
	depth, 18m, enclosed by contour	10° 42'.35 S	142° 39'.52 E

Delete	depth, 20 <sub>6</sub> m	10° 42'.0 S	142° 39'.5 E
--------	--------------------------	-------------	--------------

**Aus 839 [NE 14/4/2023]**

Insert	depth, 18m, enclosed by contour	10° 42'.35 S	142° 39'.52 E
--------	---------------------------------	--------------	---------------

**52 AUSTRALIA - QUEENSLAND - Cairns - Trinity Inlet - Light buoys***Former Notice - 733(T)/2022 is cancelled*

Maritime Safety Queensland

**Aus 262 [848/2023]**

Insert	special conical light buoy, <i>Fl. Y. 4s</i> , without topmark	16° 54'.807 S	145° 47'.200 E
	special conical light buoy, <i>Fl. Y. 4s</i> , without topmark	16° 55'.165 S	145° 47'.131 E

**Aus 262 (Trinity Inlet) [848/2023]**

Insert	special conical light buoy, <i>Fl. Y. 4s</i> , without topmark	16° 55'.165 S	145° 47'.131 E
--------	--	---------------	----------------

**53 AUSTRALIA - TORRES STRAIT - Thursday Island - Depths northeastwards**

Maritime Safety Queensland

**Aus 293 [6/2024]**

Insert	contour, between	10° 33'.683 S	142° 14'.235 E
		10° 33'.648 S	142° 14'.291 E
		10° 33'.639 S	142° 14'.362 E
		10° 33'.690 S	142° 14'.557 E
		10° 33'.719 S	142° 14'.573 E
		10° 33'.945 S	142° 14'.374 E
Delete	contour, between	10° 33'.742 S	142° 14'.498 E
		10° 33'.68 S	142° 14'.24 E
		10° 33'.67 S	142° 14'.47 E
		10° 33'.76 S	142° 14'.46 E
		10° 33'.79 S	142° 14'.45 E
		10° 33'.95 S	142° 14'.37 E

**Aus 299 [6/2024]**

Insert	contour, between	10° 33'.683 S	142° 14'.235 E	
		10° 33'.648 S	142° 14'.291 E	
		10° 33'.639 S	142° 14'.362 E	
		10° 33'.690 S	142° 14'.557 E	
		10° 33'.719 S	142° 14'.573 E	
		10° 33'.945 S	142° 14'.374 E	
	Delete	contour, between	10° 33'.664 S	142° 14'.292 E
			10° 33'.709 S	142° 14'.544 E
			10° 33'.742 S	142° 14'.498 E
			10° 33'.68 S	142° 14'.24 E
Delete	contour, between	10° 33'.67 S	142° 14'.47 E	
		10° 33'.76 S	142° 14'.46 E	
		10° 33'.79 S	142° 14'.45 E	
		10° 33'.95 S	142° 14'.37 E	

**54 AUSTRALIA - NORTHERN TERRITORY - Beagle Gulf - Depths**

Geoscience Australia

**Aus 309 [347/2023]**

Delete	depth, 27 <sub>4</sub> m, and enclosing contour with legend, ED	12° 18'.5 S	129° 58'.4 E
	depth, 30m, and enclosing contour	12° 18'.6 S	130° 03'.1 E

**Aus 316 [552/2023]**

Delete	depth, 27 <sub>4</sub> m, and enclosing contour with legend, ED	12° 18'.5 S	129° 58'.4 E
	depth, 30m, and enclosing contour	12° 18'.6 S	130° 03'.1 E

**55 AUSTRALIA - WESTERN AUSTRALIA - Lacepede Islands - Depths**

Department of Defence

**Aus 324 [1005/2023]**

Insert	accompanying block B	16° 49'.0 S	122° 19'.0 E
	accompanying block A	17° 03'.0 S	121° 43'.0 E

**56 AUSTRALIA - WESTERN AUSTRALIA - Ocean Reef Boat Harbour - Lights***Former Notice - 1025(T)/2023 is cancelled*

Department of Transport WA

**Aus 754 [1009/2023]**

Amend	light to <i>Ldg F.Bu.24m 6M &amp; Q.Iso.2s 13m 10M</i>	31° 45'.6 S	115° 43'.9 E
Move	light	31° 45'.6 S	115° 43'.7 E
	to	31° 45'.57 S	115° 43'.40 E

**57 AUSTRALIA - WESTERN AUSTRALIA - Varanus Island - Coastline, nav aids**

Santos

**Aus 65 [1044/2023]**

Insert accompanying block 20° 39'.0 S 115° 37'.5 E

**Aus 742 [603/2023]**

Insert accompanying block 20° 35'.0 S 115° 39'.0 E

**58 AUSTRALIA - SOUTH AUSTRALIA - Kangaroo Island - Cape Hart - Depths southwards**

Department of Defence

**Aus 346 [1010/2023]**Insert depth, 28<sub>7</sub>m, enclosed by contour 35° 55'.28 S 137° 55'.60 E

depth, 35m, enclosed by contour 36° 01'.21 S 137° 57'.58 E

Replace depth, 37m, with depth, 23<sub>5</sub>m, enclosed by contour 36° 02'.2 S 138° 01'.7 E

Delete depth, 35m 35° 55'.4 S 137° 56'.3 E

**Aus 485 [1010/2023]**Insert depth, 28<sub>7</sub>m, enclosed by contour 35° 55'.28 S 137° 55'.60 E

depth, 35m, enclosed by contour 36° 01'.21 S 137° 57'.58 E

Replace depth, 37m, with depth, 23<sub>5</sub>m, enclosed by contour 36° 02'.2 S 138° 01'.7 E

Delete depth, 35m 35° 55'.4 S 137° 56'.3 E

**59 AUSTRALIA - VICTORIA - Western Port - North Arm - Light buoy**

Ports Victoria Notice 8/2024

**Aus 151 [391/2023]**Insert special conical light buoy, *Fl. Y. 2·5s*, without topmark 38° 17'.790 S 145° 14'.720 E**60 AUSTRALIA - VICTORIA - Western Port - Western Channel - Scientific instrument**

Ports Victoria Notice 17/2024

**Aus 151 [59/2024]**Insert special conical light buoy, *Fl(4)Y. 20s*, without topmark 38° 29'.03 S 145° 06'.65 E

Delete light buoy 38° 29'.00 S 145° 07'.06 E

**61 SOLOMON ISLANDS - Honiara - Point Cruz - Scientific instrument**

Solomon Islands Maritime Authority Notice 19/2023

**SLB 101 (Lungga Roads) [439/2023]**Insert special pillar light buoy, *Fl. Y. 10s*, without topmark 9° 25'.450 S 159° 57'.533 E**SLB 101 (Honiara) [439/2023]**Insert special pillar light buoy, *Fl. Y. 10s*, without topmark 9° 25'.450 S 159° 57'.533 E



**62(T)/2024 AUSTRALIA - NEW SOUTH WALES - Brooms Head - Fish aggregating device off station eastwards**  
NSW Department of Primary Industries

The special light buoy, *Fl.Y.5s FAD (Sep-Jun)* (29° 36'.75 S 153° 29'.18 E), is off station and in position 29° 40'.55 S 153° 28'.03 E.

**Chart temporarily affected - Aus 812 - Aus 813**

**63(T)/2024 AUSTRALIA - QUEENSLAND - Gold Coast - Scientific instrument recovered**

*Former Notice - 555(T)/2020* is cancelled

Maritime Safety Queensland

Cancel this notice on receipt.

**Chart formerly affected - Aus 814**

**64(T)/2024 AUSTRALIA - QUEENSLAND - Gold Coast Seaway - Fish aggregating device off station eastwards**

Department of Agriculture and Fisheries

The special light buoy, *Fl.Y.3s FAD* (27° 55'.46 S 153° 37'.57 E), is off station and in position 27° 55'.83 S 153° 37'.35 E.

**Chart temporarily affected - Aus 814**

**65(T)/2024 AUSTRALIA - QUEENSLAND - Hay Point - Light range reduced**

Maritime Safety Queensland Notice 14(T)/2024

The range of the light, *Fl(2)10s 78m 20M* (21° 17'.21 S 149° 16'.63 E), has been altered to *9M*.

**Chart temporarily affected - Aus 249 - Aus 250 - Aus 823 - Aus 4602 (INT 602)**

**66(T)/2024 AUSTRALIA - QUEENSLAND - Johnstone River - Light buoy unlit**

Maritime Safety Queensland Notice 612(T)/2023

The port lateral light buoy, *Fl.R.3s* (17° 30'.62 S 146° 03'.62 E), is unlit.

Mariners are advised to navigate with caution in the area.

**Chart temporarily affected - Aus 258**

**67(T)/2024 AUSTRALIA - QUEENSLAND - Johnstone River - Wreck**

Maritime Safety Queensland Notice 613(T)/2023

A stranded wreck marked by a light, *Fl.Y.2·5s*, exists in position 17° 30'.87 S 146° 03'.42 E.

Mariners are advised to navigate with caution in the area.

**Chart temporarily affected - Aus 258**

**68(T)/2024 AUSTRALIA - NORTHERN TERRITORY - Beagle Gulf - Drill rig moved**

*Former Notice - 834(T)/2022* is cancelled

MODU *Valaris MS-1*

Cancel this notice on receipt.

**Chart formerly affected - Aus 309**

**69(T)/2024 AUSTRALIA - TIMOR SEA - Evans Shoal - Drill rig eastwards**  
 MODU *Valaris MS-1*

Drill rig *Valaris MS-1* is conducting drilling operations in position 9° 52'.10 S 130° 15'.11 E.

**Chart temporarily affected - Aus 310**

**70(T)/2024 AUSTRALIA - WESTERN AUSTRALIA - Cockburn Sound - Medina Channel - Light beacon destroyed**  
 Fremantle Ports Notice 15/2023

The port lateral light beacon, *Fl.R.2s C* (32° 09'.90 S 115° 45'.51 E), has been destroyed; a port lateral light buoy, *Fl.R.2s*, exists in situ.

**Chart temporarily affected - Aus 117**

**71(T)/2024 AUSTRALIA - WESTERN AUSTRALIA - Exmouth Plateau - Subsea operations**  
 Woodside Energy Ltd

Vessel *Fugro Etime* is conducting subsea operations in an area bound by the following positions:

20° 02'.0 S 113° 03'.9 E  
 20° 02'.0 S 113° 27'.4 E  
 19° 36'.1 S 113° 27'.4 E  
 19° 36'.1 S 113° 03'.9 E.

A 500m exclusion zone exists around the vessel.

Mariners are advised to navigate with caution in the area.

**Chart temporarily affected - Aus 329 - Aus 4723 (INT 723)**

**72(T)/2024 AUSTRALIA - WESTERN AUSTRALIA - Fremantle - Owen Anchorage - Scientific instruments**  
 Fremantle Ports Notice 19/2023

Subsurface scientific instruments exist on the seabed in positions 32° 05'.42 S 115° 43'.74 E and 32° 08'.01 S 115° 43'.22 E.

Mariners are advised to navigate with caution in the area.

**Chart temporarily affected - Aus 117**

**73(T)/2024 AUSTRALIA - WESTERN AUSTRALIA - Lowendal Islands - Well plug and abandonment works**  
 Santos

Barge *Pilbara 500* and support vessels *Kaelani*, *Loligo* and *Arafura Sea Delta* are conducting well plug and abandonment works at Simpson Alpha (20° 40'.33 S 115° 35'.13 E) and Simpson Bravo (20° 40'.40 S 115° 35'.09 E).

A 500m exclusion zone exists around all vessels involved in the works.

Mariners are advised to navigate with caution in the area.

**Chart temporarily affected - Aus 65 - Aus 327 - Aus 742**

**74(T)/2024 AUSTRALIA - WESTERN AUSTRALIA - Montebello Islands - Drilling operations northwards**  
 Former Notice - 32(T)/2024 is cancelled  
 Woodside Energy Ltd

Cancel this notice on receipt.

**Chart formerly affected - Aus 328**

**75(P)/2024 AUSTRALIA - WESTERN AUSTRALIA - Onslow - Shoaling**  
OSMB

Latest survey indicates shoaler depths than those charted may exist within the spoil ground in the vicinity of position 21° 36'.88 S 115° 06'.31E

Mariners are advised to navigate with caution in the area.

Charts will be updated in due course.

**Chart which will be affected - Aus 64**

**76(T)/2024 AUSTRALIA - WESTERN AUSTRALIA - Perth - Survey operations westwards**  
EGS Survey Pty Ltd

MV *Samson Explorer* is conducting survey operations with towed equipment, in an area bound by the following positions:

32° 15'.29 S 114° 57'.62 E  
32° 01'.81 S 115° 17'.64 E  
31° 58'.40 S 115° 30'.86 E  
32° 00'.74 S 115° 43'.34 E  
31° 53'.76 S 115° 43'.76 E  
32° 51'.77 S 115° 29'.30 E  
31° 54'.13 S 115° 12'.70 E  
32° 04'.88 S 114° 52'.55 E.

The vessel will display appropriate lights and shapes and monitor VHF Ch 16.

Mariners are advised to navigate with caution in the area.

**Chart temporarily affected - Aus 112 - Aus 754 - Aus 755**

**77(T)/2024 AUSTRALIA - WESTERN AUSTRALIA - Port Hedland - Scientific instruments**  
Pilbara Ports Authority Notice PH17(T)/2023

Subsurface scientific instruments exist on the seabed in the following positions:

20° 12'.93 S 118° 29'.34 E  
20° 13'.24 S 118° 31'.92 E  
20° 15'.33 S 118° 32'.46 E.

Mariners are advised to navigate with caution in the area.

**Chart temporarily affected - Aus 53 - Aus 326**

**78(T)/2024 AUSTRALIA - WESTERN AUSTRALIA - Port Hedland - Scientific instruments recovered**  
*Former Notice - 330(T)/2023 is cancelled*  
Pilbara Ports Authority

Cancel this notice on receipt.

**Chart formerly affected - Aus 53**

**79(T)/2024 AUSTRALIA - VICTORIA - Port Campbell - Subsea operations southwards**  
Beach Energy Limited

On or about 1 February 2024, vessel *MMA Coral* will be conducting subsea operations between positions 38° 38'.06 S 142° 58'.56 E and 39° 14'.25 S 142° 54'.13 E; and in the vicinity of position 39° 50'.68 S 145° 49'.10 E.

Mariners are advised to navigate with caution in the area and keep well clear.

**Chart temporarily affected - Aus 349 - Aus 487**

**80(T)/2024 AUSTRALIA - VICTORIA - Port Phillip - Sandringham - Light buoy off station**  
Parks Victoria Notice 20(T)/2024

The special light buoy, *Fl(4)Y.10s SYC1* (37° 57'.81 S 144° 58'.88 E), is off station.

Mariners are advised to navigate with caution in the area.

**Chart temporarily affected - Aus 155**

**81(T)/2024 AUSTRALIA - VICTORIA - Port Phillip - Brighton - Light buoy off station**  
Parks Victoria Notice 13(T)/2024

The special light buoy, *Fl(4)Y.12s RBYC3* (37° 54'.46 S 144° 57'.16 E), is off station.

Mariners are advised to navigate with caution in the area.

**Chart temporarily affected - Aus 155**

**82(T)/2024 AUSTRALIA - VICTORIA - Port Phillip - Altona - Light buoy damaged and unlit**  
Parks Victoria Notice 11(T)/2024

The south cardinal light buoy, *VQ(6)+LFl.10s* (37° 52'.41 S 144° 50'.70 E), is unlit and the topmark is missing.

Mariners are advised to navigate with caution in the area.

**Chart temporarily affected - Aus 155**

**83(T)/2024 AUSTRALIA - VICTORIA - Western Port - Hastings Bight - Light beacon damaged and unlit**  
Parks Victoria Notice 21(T)/2024

The west cardinal light beacon, *VQ(9)10s No17* (38° 18'.74 S 145° 12'.66 E), is unlit and the topmark is missing.

Mariners are advised to navigate with caution in the area.

**Chart temporarily affected - Aus 151**

**84(T)/2024 AUSTRALIA - TASMANIA - Franklin Sound - Little Green Island - Light beacon destroyed**  
Marine and Safety Tasmania Notice M20(T)/2024

The port lateral light beacon, *Q.R* (40° 14'.05 S 148° 16'.05 E), has been destroyed.

Mariners are advised to navigate with caution in the area.

**Chart temporarily affected - Aus 179**

**85(T)/2024 AUSTRALIA - TASMANIA - Macquarie Harbour - Lit barge**  
Marine and Safety Tasmania Notice M10/2024

The barge *Wombat* which is marked by a light, *F*, exists in position 42° 17'.55 S 145° 22'.18 E.

Mariners are advised to navigate with caution in the area.

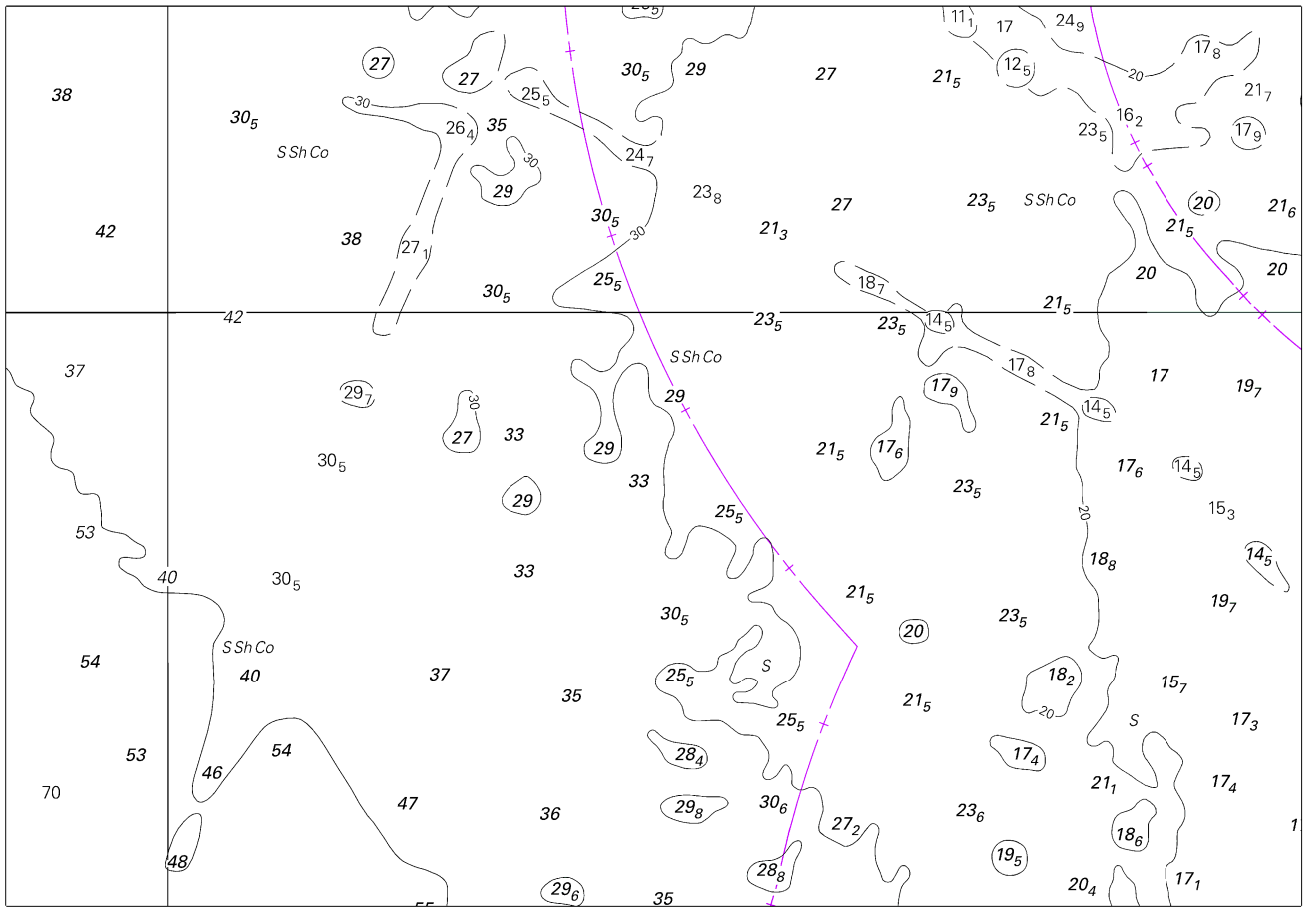
**Chart temporarily affected - Aus 177**

II

**HYDROGRAPHIC REPORTS**

NIL

To accompany Australian Notice to Mariners 55/2024

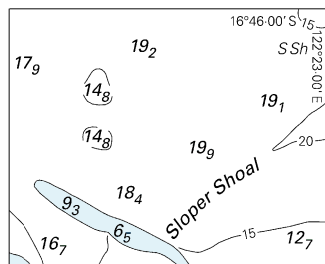


Block A for chart Aus 324

© Commonwealth of Australia 2024

(171.3 x 119.0mm)

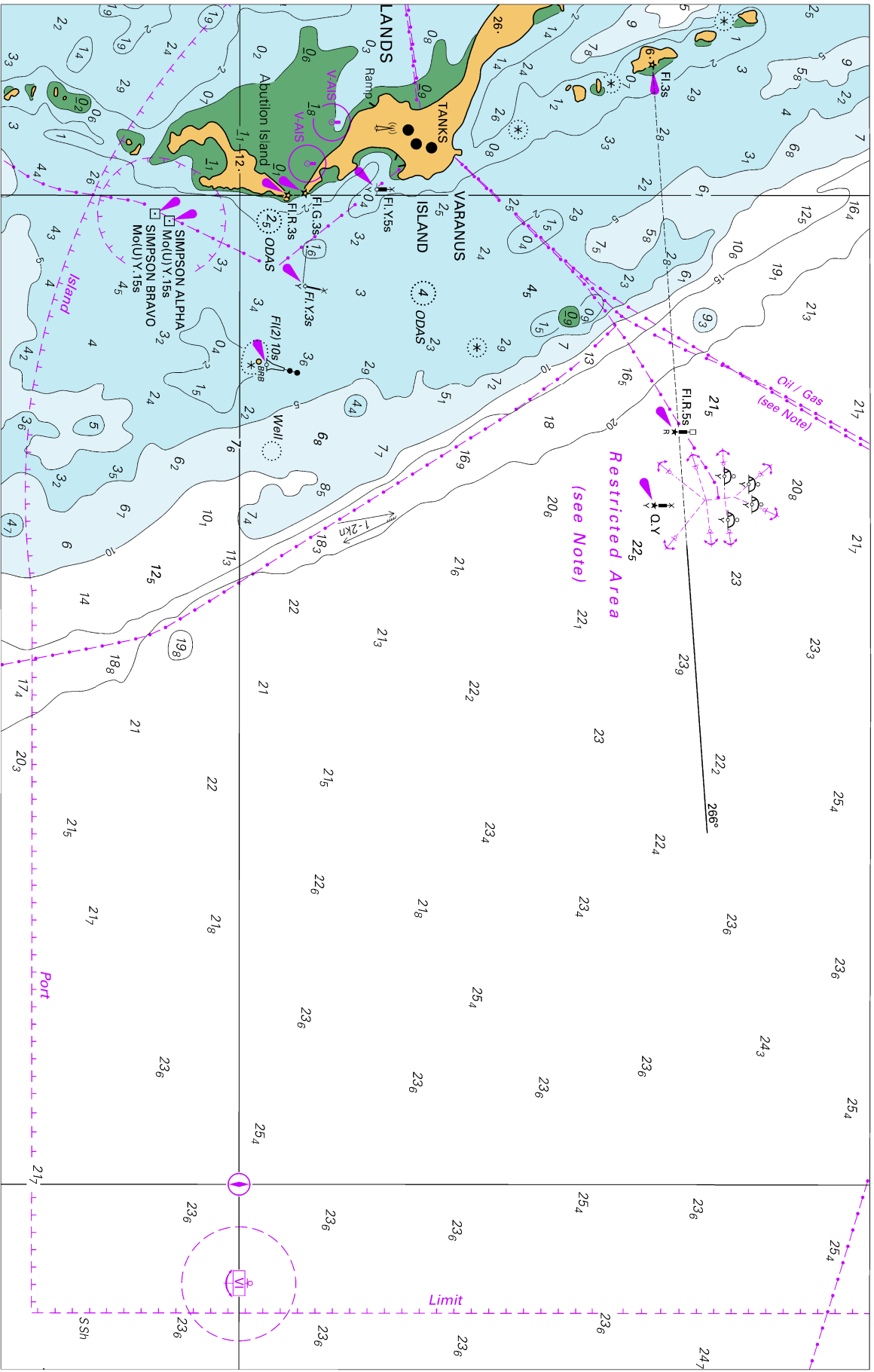
To accompany Australian Notice to Mariners 55/2024



(42.4 x 33.7mm)

Block B for chart Aus 324  
© Commonwealth of Australia 2024

To accompany Australian Notice to Mariners 57/2024



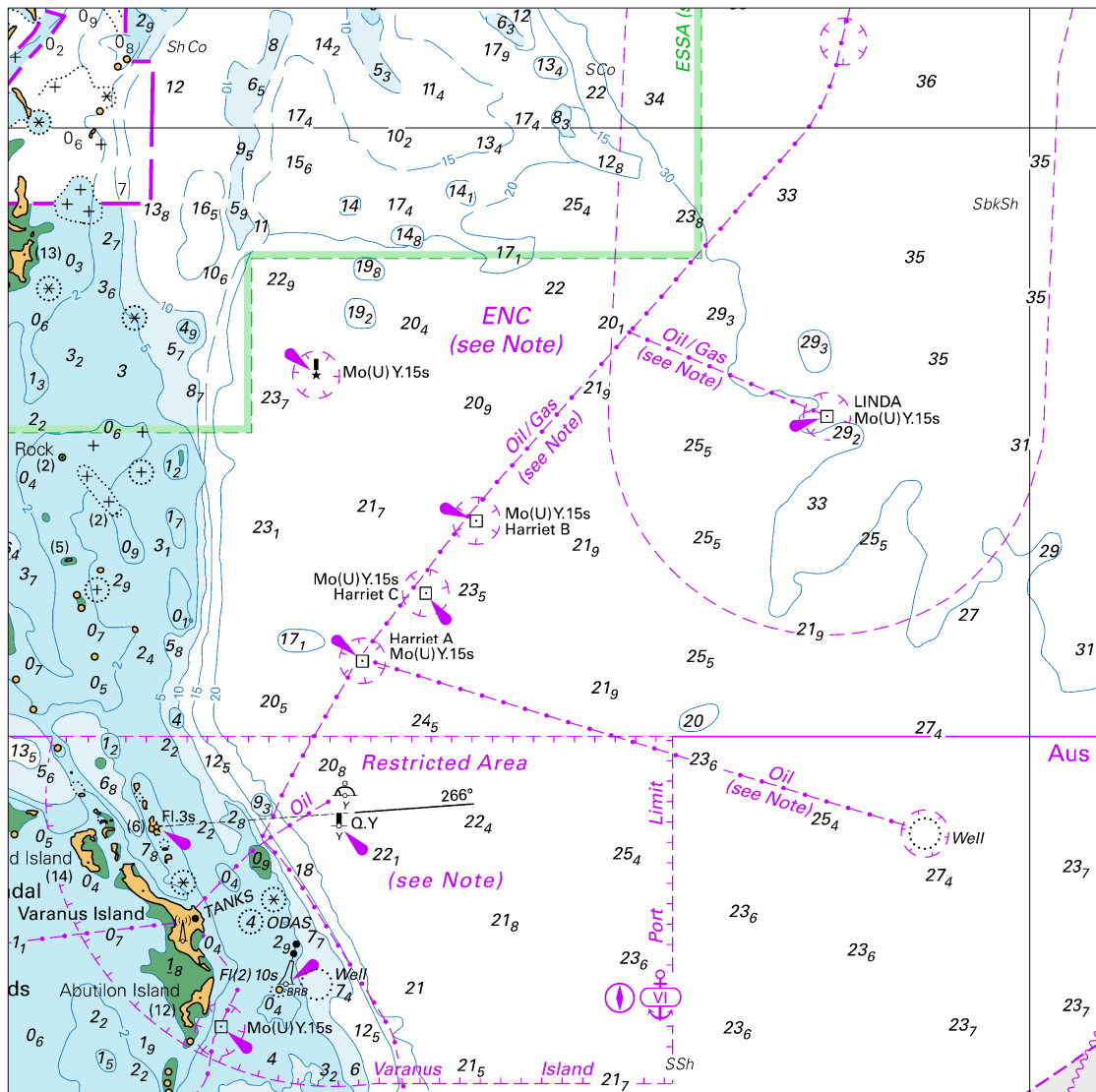
Block for chart Aus 65

© Commonwealth of Australia 2024

(239.5 x 152.2mm)



To accompany Australian Notice to Mariners 57/2024



Block for chart Aus 742

© Commonwealth of Australia 2024

(146.4 x 145.8mm)