



1 March 2024

Edition 5

AUSTRALIAN NOTICES TO MARINERS

Notices 177 - 203

Published fortnightly by the Australian Hydrographic Office



Australian Notices to Mariners are the authority for correcting charts and publications published by the Australian Hydrographic Office covering Australia, Papua New Guinea, Solomon Islands, Australian Antarctic Territory and Timor-Leste.

Commodore R.L. PHILLIPS RAN
Hydrographer of Australia

SECTIONS.

- I. **Australian Notices to Mariners, including blocks and notes.**
- II. **Hydrographic Reports.**

SUPPLEMENTS.

- I. **Tracings**
 - II. **Cumulative List of Australian Notices to Mariners.**
 - III. **Cumulative List of Temporary and Preliminary Australian Notices to Mariners.**
 - IV. **Temporary and Preliminary Notices in force.**
-
-

© Commonwealth of Australia 2024

This work is copyright. Apart from any use permitted under the Copyright Act 1968, no part may be reproduced by any process, adapted, communicated or commercially exploited without prior written permission from The Commonwealth represented by the Australian Hydrographic Office.

IMPORTANT NOTICE

This edition of Notices to Mariners includes all significant information affecting AHO products which the AHO has become aware of since the last edition. All reasonable efforts have been made to ensure the accuracy and completeness of the information, including third party information, on which these updates are based. The AHO regards third parties from which it receives information as reliable, however the AHO cannot verify all such information and errors may therefore exist. The AHO does not accept liability for errors in third party information.

GENERAL INSTRUCTIONS

The substance of these notices should be inserted on the charts affected.

Bearings are referred to the true compass and are reckoned clockwise from North; those relating to lights are given as seen by an observer from seaward.

Positions quoted in notices relate to WGS84 which is the horizontal datum for all charts produced by the Australian Hydrographic Office.

The range quoted for a light is its nominal range.

Depths are with reference to the chart datum of each chart. Heights are above mean high water springs or mean higher high water, as appropriate.

The capital letter (P) or (T) after the number of any notice denotes a preliminary or temporary notice respectively, which are contained separately at the end of the permanent notices.

REPORTING OF DANGERS

Mariners are particularly requested to notify the AUSTRALIAN HYDROGRAPHIC OFFICE, Locked Bag 8801 Wollongong, NSW 2500 (e-mail datacentre@hydro.gov.au or, alternatively by filling in and submitting the [Hydrographic Notes](#) forms located on the web site – www.hydro.gov.au), immediately on the discovery of new dangers or suspected dangers to navigation. For changes or defects in aids to navigation notify AusSAR (Fax 02-6230 6868 or email rccaus@amsa.gov.au).

AUTHORISED USE

Copies of Australian notices are available free of charge from the Australian Hydrographic Office (AHO) website (www.hydro.gov.au) and through the eNotices (email) service (www.hydro.gov.au/enotices/enotices.htm).

Individual Notices may be copied for the purpose of inserting Notice substance on official charts and publications. Paper copies may be printed by chart agents and distributed to customers on a cost recovery basis. Participating chart agents are listed on the AHO website as providing a 'Paper Notices to Mariners' service (www.hydro.gov.au/webapps/jsp/agents/agents-list.jsp). Copies of the notices may not be sold for profit without prior written agreement.

NUMERICAL INDEX OF NOTICES TO MARINERS

Edition No 5

Notices	Aus Chart, INT Chart, ENC Cell, AHP, BA Pubs
177	Aus 112, 116
178	Aus 604
179	Aus 195, 808
180	Aus 823
181	Aus 236
182	Aus 319
183	Aus 335, 755
184	Aus 607
185	Aus 144
186	Aus 349, 487
187	Aus 177
188(T)	Aus 256
189(T)	Aus 292, 293, 301, 700, 839, 841
190(T)	Aus 309, 315, 316, 318
191(T)	Aus 312
192(T)	Aus 65, 327, 328, 742
193(T)	Aus 335, 755, 4060, 4070, 4708, 4709, INT 60, 70, 708, 709
194(T)	Aus 143, 144, 155, 349, 801
195(T)	Aus 143, 157
196(T)	Aus 155
197(T)	Aus 143
198(T)	Aus 144
199(T)	Aus 801
200(T)	Aus 143, 349, 357, 487, 800, 801, 802
201(T)	Aus 171, 173, 795, 796
202(T)	Aus 790
203(T)	Aus 796, 797

NUMERICAL INDEX OF CHARTS AFFECTED

Edition No 5

Aus Chart	Notices	INT Chart	Notices
Aus 65	192(T)	INT 60	193(T)
Aus 112	177	INT 70	193(T)
Aus 116	177	INT 708	193(T)
Aus 143	194(T), 195(T), 197(T), 200(T)	INT 709	193(T)
Aus 144	185, 194(T), 198(T)		
Aus 155	194(T), 196(T)		
Aus 157	195(T)		
Aus 171	201(T)		
Aus 173	201(T)		
Aus 177	187		
Aus 195	179		
Aus 236	181		
Aus 256	188(T)		
Aus 292	189(T)		
Aus 293	189(T)		
Aus 301	189(T)		
Aus 309	190(T)		
Aus 312	191(T)		
Aus 315	190(T)		
Aus 316	190(T)		
Aus 318	190(T)		
Aus 319	182		
Aus 327	192(T)		
Aus 328	192(T)		
Aus 335	183, 193(T)		
Aus 349	186, 194(T), 200(T)		
Aus 357	200(T)		
Aus 487	186, 200(T)		
Aus 604	178		
Aus 607	184		
Aus 700	189(T)		
Aus 742	192(T)		
Aus 755	183, 193(T)		
Aus 790	202(T)		
Aus 795	201(T)		
Aus 796	201(T), 203(T)		
Aus 797	203(T)		
Aus 800	200(T)		
Aus 801	194(T), 199(T), 200(T)		
Aus 802	200(T)		
Aus 808	179		
Aus 823	180		
Aus 839	189(T)		
Aus 841	189(T)		
Aus 4060	193(T)		
Aus 4070	193(T)		
Aus 4708	193(T)		
Aus 4709	193(T)		

177 AUSTRALIA - Products - New Charts, New Editions, Withdrawn Charts

Australian Hydrographic Office

New Charts

Chart	Title and Geographical limits	Scale	Publication Date	Remarks
NIL				

New Electronic Navigation Chart (Aus ENC)

Cell Name	Title	Publication Date	Remarks
NIL			

New Editions and Withdrawn Charts

Chart	Title	Scale	Publication Date	Remarks
Aus 112 (Edition 7)	Australia - West Coast - Western Approaches to Fremantle	1:37 500	1 March 2024	New edition with general updating throughout; including changes to vessel movements to and from the port of Fremantle. Chart Aus 112 Edition 6 dated 28 June 2019 is now superseded and must be withdrawn from use.
Aus 116 (Edition 8)	Australia - South West Coast - Plans in Western Australia - West and South Coast Plans: Flinders Bay Warnbro Sound Hamelin Bay Mary Ann Haven Entrance to Mandurah Estuary Starvation Boat Harbour Port Geographe Marina	1:50 000 1:37 500 1:25 000 1:20 000 1:15 000 1:15 000 1:12 500	1 March 2024	New edition with general updating throughout; including new bathymetric data for the Flinders Bay and Hamelin Bay plans. Chart Aus 116 Edition 7 dated 18 March 2022 is now superseded and must be withdrawn from use.

Chart permanently withdrawn

Charts listed above as withdrawn no longer meet chart carriage requirements and should be marked as "superseded" and replaced with the new chart/ new edition listed prior to passage through the area covered by the new chart.

When placing orders with a chart agent between notice of forthcoming edition and its publication, mariners should advise whether their order pertains to the current edition or the new edition.

For further details refer to the AHO website at www.hydro.gov.au for new edition and new chart stock arrival information.

178 AUSTRALIA - Products - New Charts and New Editions to be published shortly

Australian Hydrographic Office

New Charts to be published shortly

Chart	Title	Scale	Remarks
NIL			

New Editions to be published shortly

Chart	Title	Scale	Remarks
Aus 604	Southern Ocean - Macquarie Island and Approaches Plan: Hasselborough and Buckles Bays	1:100 000 1:15 000	New edition with general updating throughout; including new bathymetric data.

179 AUSTRALIA - NEW SOUTH WALES - Port Kembla - Depths; wreck
Port Authority of New South Wales

Aus 195 [86/2023]			
Insert	depth, 25m, enclosed danger circle with magenta legend, <i>Historic Wk</i> (see Note)	34° 26'.683 S	150° 55'.560 E
	depth, 26 ₉ m	34° 26'.912 S	150° 55'.444 E
Replace	depth, 28 ₅ m, with depth, 29 ₇ m	34° 26'.66 S	150° 55'.65 E
Delete	depth, 24m, and enclosing danger circle with legend, Wk	34° 26'.67 S	150° 55'.54 E
Aus 808 [138/2024]			
Replace	wreck depth, 24m, with wreck depth, 25m	34° 26'.7 S	150° 55'.6 E
	legend, Wk, with magenta legend, <i>Historic Wk</i> (see Note)	34° 26'.7 S	150° 55'.9 E

180 AUSTRALIA - QUEENSLAND - Hay Point - Light beacon; navline
UKHO

Aus 823 [NE 24/11/2023]			
Amend	light beacon to <i>Dir Iso.WRG & Fl.G</i>	21° 17'.3 S	149° 17'.9 E
Delete	continuous line and legend, Dir 243°, emanating from light beacon	21° 17'.3 S	149° 17'.9 E

181 AUSTRALIA - QUEENSLAND - Moreton Bay - Spitfire Channel - Virtual AIS
Maritime Safety Queensland Notice 73/2024

Aus 236 [999/2023]			
Insert	starboard lateral virtual AIS	27° 03'.37 S	153° 16'.26 E
	port lateral virtual AIS	27° 04'.79 S	153° 18'.08 E

182 AUSTRALIA - WESTERN AUSTRALIA - Goeree Shoal - Scientific instrument southeastwards
Shell Australia

Aus 319 [141/2024]			
Insert	special pillar light buoy, <i>Fl(5)Y.20s</i> , without topmark	12° 55'.74 S	124° 26'.17 E

183 AUSTRALIA - WESTERN AUSTRALIA - Naturaliste Reefs - Fish aggregating device westwards
Department of Primary Industries and Regional Development WA

Aus 335 [1045/2023]			
Insert	accompanying block	33° 12'.0 S	114° 47'.0 E
Aus 755 [1045/2023]			
Insert	accompanying block	33° 12'.0 S	114° 56'.0 E

184 INDIAN OCEAN - Cocos (Keeling) Islands - South Keeling Islands - Port Refuge - Depth
Teekay Shipping

Aus 607 [148/2024]			
Replace	depth, 6 ₇ m, with depth, 5 ₆ m	12° 05'.85 S	96° 51'.97 E

185 AUSTRALIA - VICTORIA - Port Phillip - South Channel - Wreck
Australian Hydrographic Office

Aus 144 [966/2023]			
Replace	legend, Wk, with magenta legend, <i>Historic Wk</i> (see Note)	38° 17'.40 S	144° 40'.94 E

186 AUSTRALIA - TASMANIA - King Island - Depths

Department of Defence

Aus 349 [969/2023]

Insert	accompanying ZOC diagram	38° 21'.5 S	143° 48'.0 E
	accompanying block	39° 38'.0 S	144° 00'.0 E

Aus 487 [969/2023]

Insert	accompanying block	39° 38'.0 S	144° 00'.0 E
--------	--------------------	-------------	--------------

187 AUSTRALIA - TASMANIA - Macquarie Harbour - Scientific instrument

Marine and Safety Tasmania Notice M90(T)/2024

Aus 177 [103/2024]

Insert	special pillar light buoy, <i>Fl. Y. 5s</i> , without topmark	42° 14'.95 S	145° 19'.51 E
--------	---	--------------	---------------

188(T)/2024 AUSTRALIA - QUEENSLAND - Townsville - Light beacon removed

Former Notice - 16(T)/2024 is cancelled
Maritime Safety Queensland Notice 80(T)/2024

The port lateral light beacon, Q.R (19° 14'.57 S 146° 50'.12 E), has been removed; a port lateral virtual AIS exists in situ.

Chart temporarily affected - Aus 256

189(T)/2024 AUSTRALIA - TORRES STRAIT - Great North East Channel to Adolphus Channel - Survey operations northwards completed

Former Notice - 938(T)/2023 is cancelled
Precision Hydrographic Services

Cancel this notice on receipt.

Chart formerly affected - Aus 292 - Aus 293 - Aus 301 - Aus 700 - Aus 839 - Aus 841

190(T)/2024 AUSTRALIA - NORTHERN TERRITORY - Timor Sea - Survey operations completed

Former Notice - 20(T)/2024 is cancelled
Australian Maritime Safety Authority , INPEX

Cancel this notice on receipt.

Chart formerly affected - Aus 309 - Aus 315 - Aus 316 - Aus 318

191(T)/2024 AUSTRALIA - TIMOR SEA - Sahul Banks - Survey operations

Santos

On or about 12 March 2024, vessel *MMA Prestige* and a ROV will be conducting survey operations in an area bounded by the following positions:

11° 07'.10 S 126° 33'.18 E
11° 08'.15 S 126° 41'.28 E
10° 59'.70 S 126° 42'.77 E
11° 01'.02 S 126° 33'.32 E.

Mariners are advised to keep well clear and to navigate with caution in the area.

Chart temporarily affected - Aus 312

192(T)/2024 AUSTRALIA - WESTERN AUSTRALIA - Barrow Island - Subsea operations northwestwards

Former Notice - 160(T)/2024 is cancelled
DOF Management

Vessel *Skandi Hercules* is conducting subsea operations in the vicinity of position 19° 48'.8 S 114° 36'.5 E and in an area bounded by the following positions:

20° 29'.35 S 114° 53'.63 E
20° 40'.20 S 115° 21'.10 E
20° 39'.20 S 115° 21'.30 E
20° 28'.95 S 114° 53'.79 E.

Mariners are advised to navigate with caution in the area.

Chart temporarily affected - Aus 65 - Aus 327 - Aus 328 - Aus 742

193(T)/2024 AUSTRALIA - WESTERN AUSTRALIA - Cape Naturaliste - Light altered

Australian Maritime Safety Authority Temporary ATH 2/2024

The light, *Fl(2)10s 123m 26M* (33° 32'.24 S 115° 01'.12 E), has been altered to *Fl.10s 123m 21M*.

Chart temporarily affected - Aus 335 - Aus 755 - Aus 4060 (INT 60) - Aus 4070 (INT 70) - Aus 4708 (INT 708) - Aus 4709 (INT 709)

194(T)/2024 AUSTRALIA - VICTORIA - Port Phillip - Survey operations completed

Former Notice - 173(T)/2024 is cancelled
Ports Victoria Notice 91(T)/2024

Cancel this notice on receipt.

Chart formerly affected - Aus 143 - Aus 144 - Aus 155 - Aus 349 - Aus 801

195(T)/2024 AUSTRALIA - VICTORIA - Port Phillip - Point Richards - Light beacon relit

Former Notice - 39(T)/2024 is cancelled
Parks Victoria Notice 75/2024

Cancel this notice on receipt.

Chart formerly affected - Aus 143 - Aus 157

196(T)/2024 AUSTRALIA - VICTORIA - Port Phillip - Hobsons Bay - Light relit

Former Notice - 127(T)/2024 is cancelled
Parks Victoria Notice 69(T)/2024

Cancel this notice on receipt.

Chart formerly affected - Aus 155

197(T)/2024 AUSTRALIA - VICTORIA - Port Phillip - Chelsea - Beacon destroyed

Former Notice - 1032(T)/2021 is cancelled
Parks Victoria Notice 333(T)/2021, 79/2024

The special beacon (38° 03'.47 S 145° 06'.74 E) has been destroyed; a special conical buoy exists in situ.

Chart temporarily affected - Aus 143

198(T)/2024 AUSTRALIA - VICTORIA - Port Phillip - Lonsdale Bay - Light beacon unlit

Parks Victoria Notice 92(T)/2024

The special light beacon, *Fl. Y. 5s* (38° 16'.60 S 144° 37'.62 E), is unlit.

Mariners are advised to navigate with caution in the area.

Chart temporarily affected - Aus 144

199(T)/2024 AUSTRALIA - VICTORIA - Venus Bay - Scientific instrument recovered

Former Notice - 1047(T)/2022 is cancelled
Safe Transport Victoria Notice 78/2024

Cancel this notice on receipt.

Chart formerly affected - Aus 801

200(T)/2024 AUSTRALIA - BASS STRAIT - Survey operations

Former Notice - 131(T)/2024 is cancelled

EGS Survey Pty Ltd , Australian Maritime Safety Authority Auscoast Warning 72/2024, Safe Transport Victoria Notice 68(T)/2024

MV *Samson Explorer* is conducting survey operations, with a 900m towed array, in an area bound by the following positions:

39° 49'.58 S 142° 57'.37 E
 38° 40'.89 S 144° 27'.27 E
 39° 42'.27 S 146° 30'.47 E
 39° 39'.49 S 148° 59'.09 E
 39° 10'.04 S 148° 53'.17 E
 39° 20'.84 S 146° 43'.38 E
 38° 20'.45 S 144° 19'.71 E
 39° 39'.63 S 142° 48'.16 E.

The vessel will display appropriate lights and shapes and monitor VHF Ch 16.

A 500m exclusion zone exists around the vessel.

Mariners are advised to navigate with caution in the area.

Chart temporarily affected - Aus 143 - Aus 349 - Aus 357 - Aus 487 - Aus 800 - Aus 801 - Aus 802

201(T)/2024 AUSTRALIA - TASMANIA - Hobart to Storm Bay - Survey operations

Precision Hydrographic Services

MV *Outer Limit*, with a 100m towed array, is conducting survey operations between the following positions;

42° 52'.90 S 147° 20'.59 E
 42° 54'.77 S 147° 22'.95 E
 43° 01'.94 S 147° 22'.11 E
 43° 12'.10 S 147° 32'.33 E.

The vessel will display appropriate lights and shapes.

Mariners are advised to navigate with caution in the area.

Chart temporarily affected - Aus 171 - Aus 173 - Aus 795 - Aus 796

202(T)/2024 AUSTRALIA - TASMANIA - Perkins Island to Rocky Cape - Scientific instruments recovered

Former Notice - 780(T)/2023 is cancelled

Marine and Safety Tasmania Notice M75(T)/2024

Cancel this notice on receipt.

Chart formerly affected - Aus 790

203(T)/2024 AUSTRALIA - TASMANIA - Tasman Peninsula - O'Hara Bluff - Fish aggregating device off station eastwards

Marine and Safety Tasmania Notice M91(T)/2024

The special light buoy, *Fl. Y. 3s FAD* (43° 05'.32 S 148° 01'.63 E), is off station.

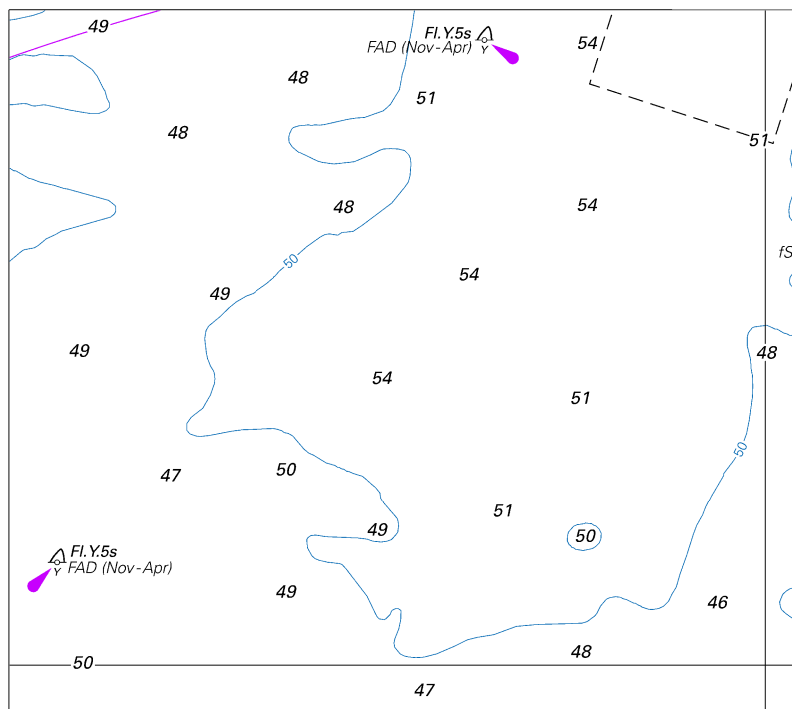
Chart temporarily affected - Aus 796 - Aus 797

II

HYDROGRAPHIC REPORTS

NIL

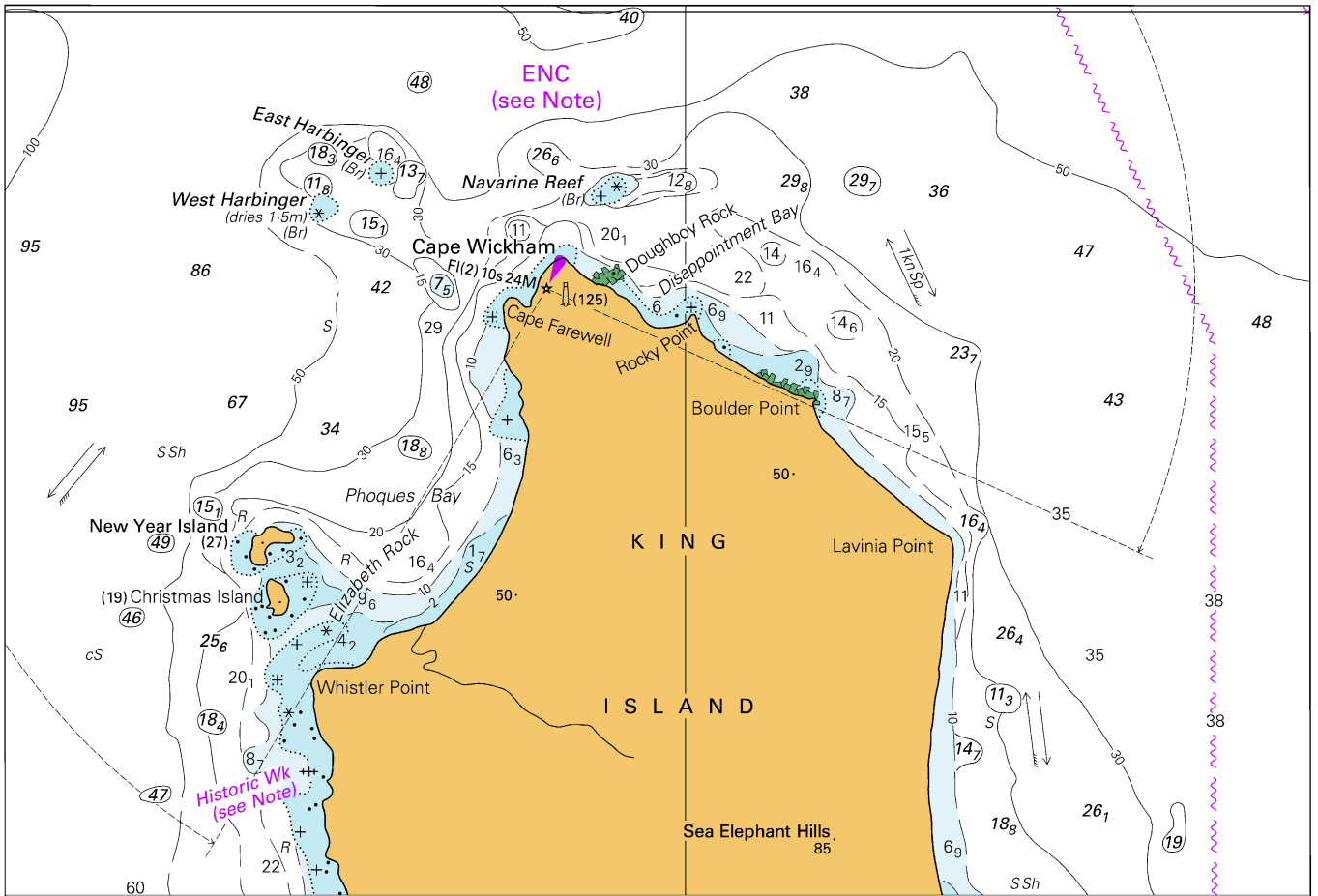
To accompany Australian Notice to Mariners 183/2024



Block for chart Aus 755 © Commonwealth of Australia 2024

(104.0 x 92.7mm)

To accompany Australian Notice to Mariners 186/2024



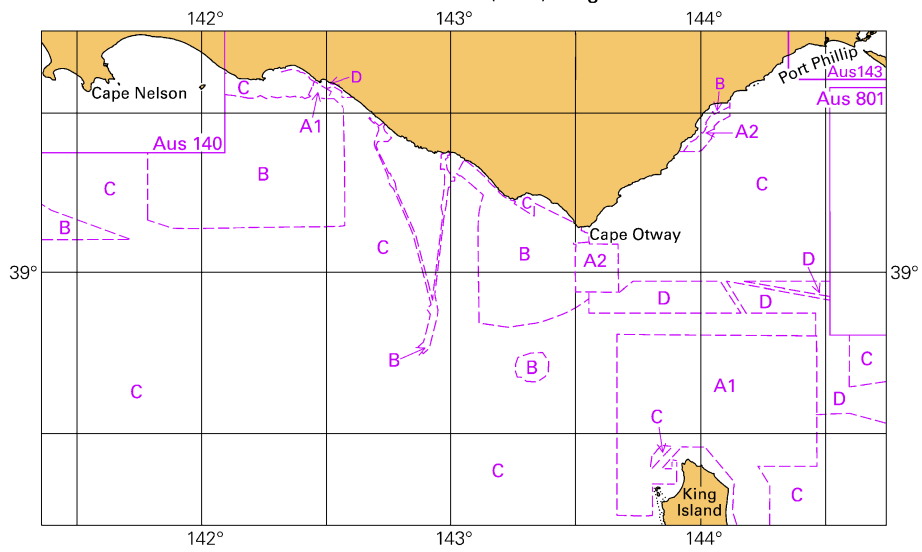
Block for chart Aus 349

© Commonwealth of Australia 2024

(178.7 x 122.6mm)

To accompany Australian Notice to Mariners 186/2024

Zone of Confidence (ZOC) Diagram

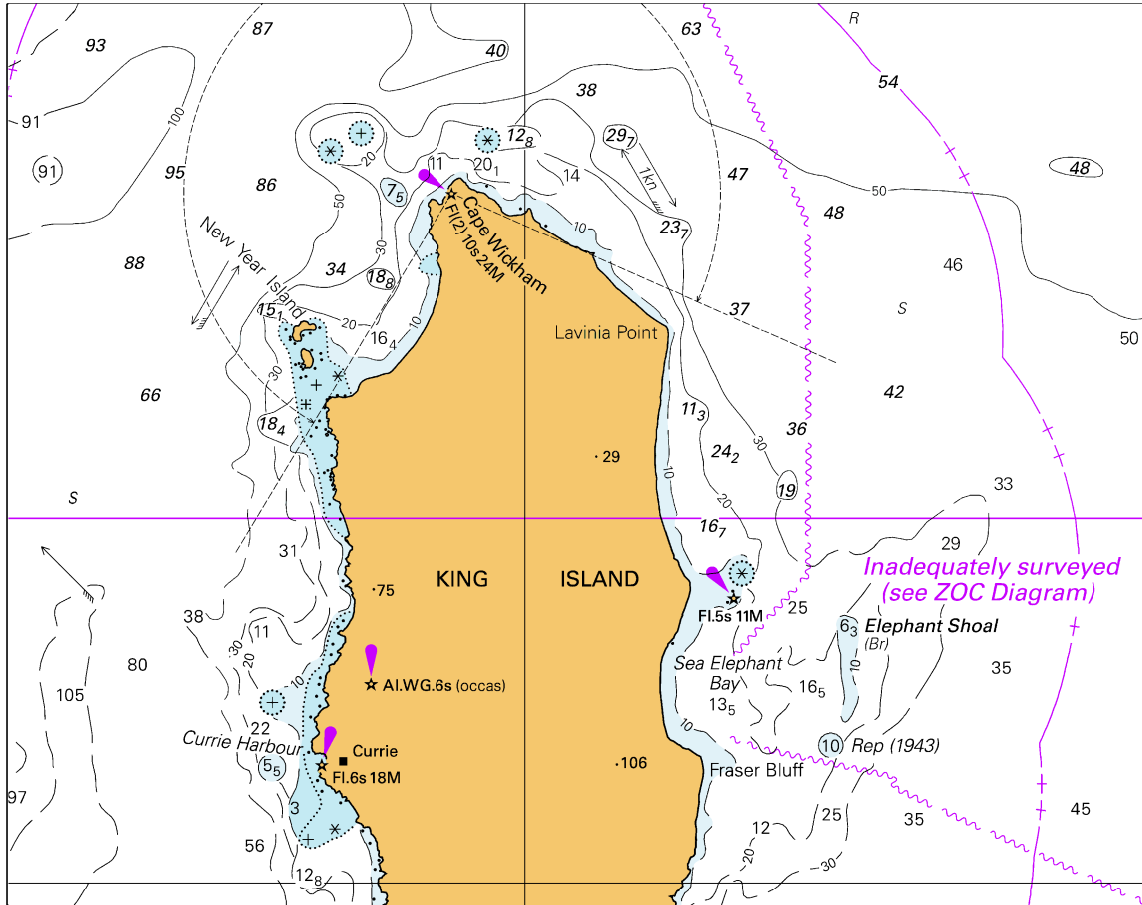


Block for chart Aus 349

© Commonwealth of Australia 2024

(111-5 x 65-0mm)

To accompany Australian Notice to Mariners 186/2024



Block for chart Aus 487

© Commonwealth of Australia 2024

(150.2 x 119.2mm)